



Madison, Wisconsin

INDEX OF SHEETS

SHEET NO.	TITLE
1	DETAILED LINING LIMITS
D1	NOBEL LN & BLAINE DR PLANS
P1	TROY DR & MARCY RD PLANS
P2-P3	WOODWARD DR PLANS
P4	FORSTER DR PLANS
P5	

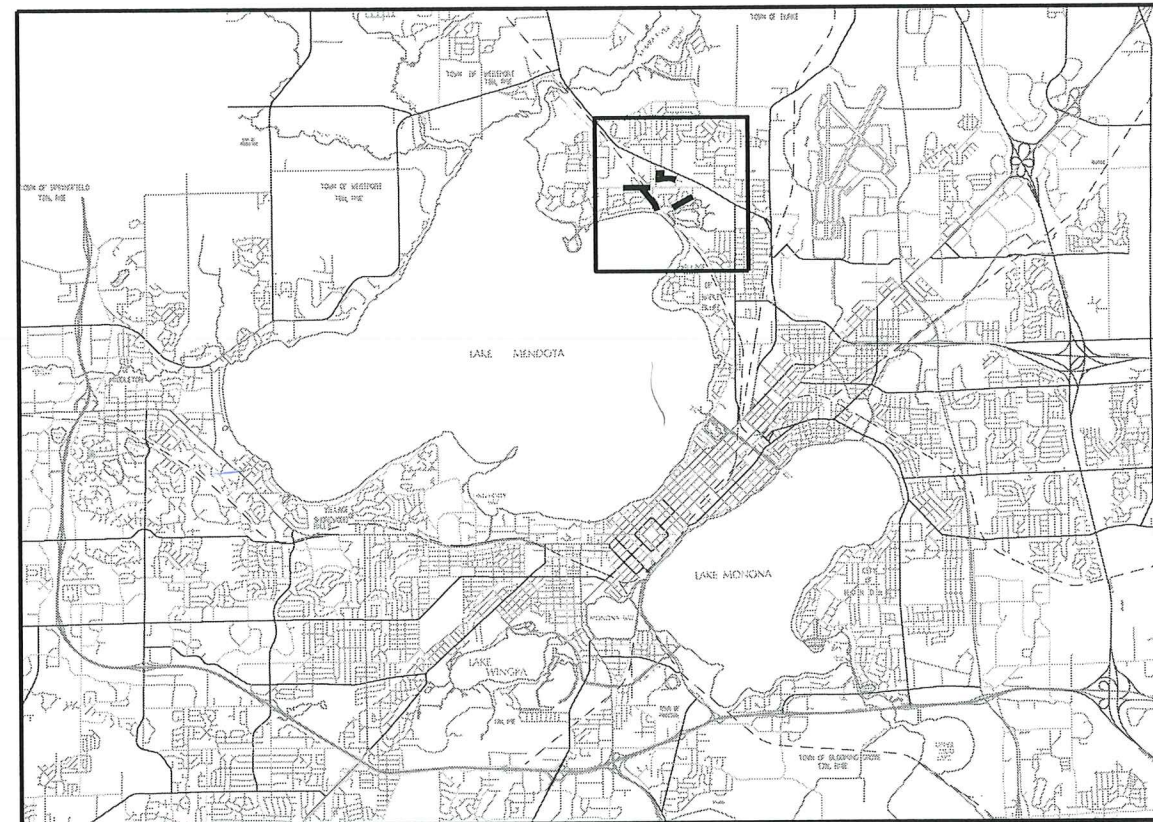
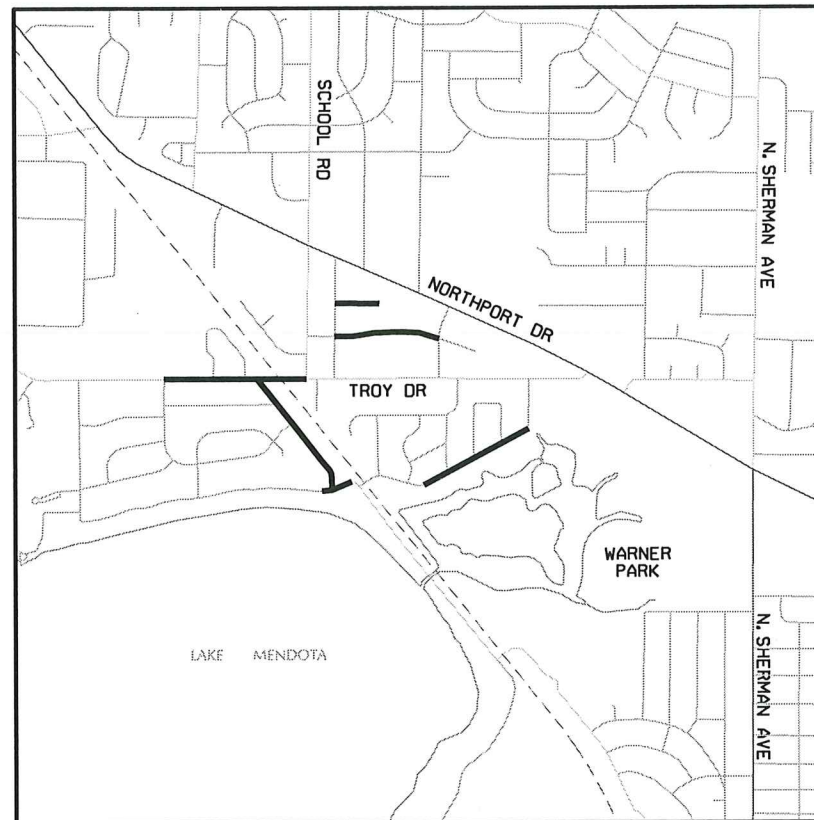
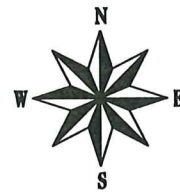
CITY OF MADISON

CITY ENGINEERING DIVISION DEPARTMENT OF PUBLIC WORKS PLAN OF PROPOSED IMPROVEMENT

UV CIPP REHAB OF SANITARY SEWERS – 2019

CITY PROJECT NO. 12698

CITY CONTRACT NO. 8532



PUBLIC IMPROVEMENT PROJECT APPROVED

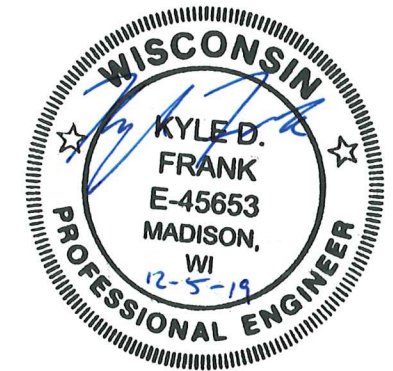
OCTOBER 15, 2019

BY THE COMMON COUNCIL OF MADISON, WISCONSIN

PUBLIC IMPROVEMENT DESIGN APPROVED BY:

[Signature] 12/5/19
City Engineer Date

SANITARY SEWER DESIGNED BY:



PLOT SCALE:

PLOT NAME:

REV. DATE:

ORIGINATOR: CITY OF MADISON, STREETS DIVISION

FILE NAME:

DATE: 12/5/2019

DETAILED LINING LIMITS

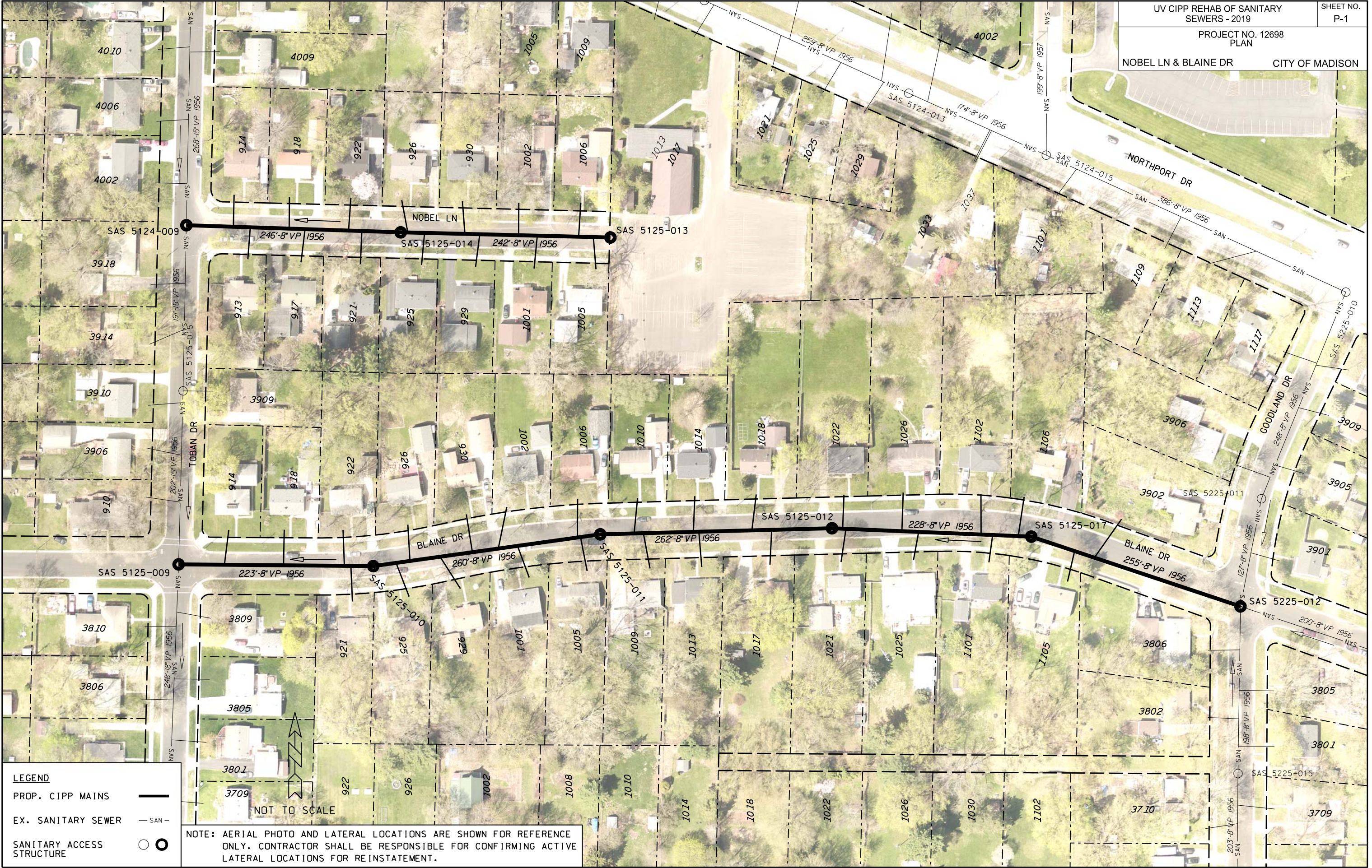
LOCATION	U.S. STRUCT.	D.S. STRUCT.	DIA (IN)	LENGTH (LF)	MATERIAL	LATERALS	SHEET
NOBEL LN	SAS 5125-013	SAS 5125-014	8	242	VP	8	P1
NOBEL LN	SAS 5125-014	SAS 5124-009	8	246	VP	6	P1
BLAINE DR	SAS 5225-012	SAS 5125-017	8	255	VP	2	P1
BLAINE DR	SAS 5125-017	SAS 5125-012	8	228	VP	7	P1
BLAINE DR	SAS 5125-012	SAS 5125-011	8	262	VP	6	P1
BLAINE DR	SAS 5125-011	SAS 5125-010	8	260	VP	8	P1
BLAINE DR	SAS 5125-010	SAS 5125-009	8	223	VP	4	P1
TROY DR	SAS 4926-002	SAS 4926-001	15	295	RCP	4	P2
TROY DR	SAS 4926-001	SAS 5026-006	15	188	RCP	4	P2
TROY DR	SAS 5026-006	SAS 5026-005	15	80	RCP	0	P2
TROY DR	SAS 5026-005	SAS 5026-007	15	214	RCP	5	P2
TROY DR	SAS 5026-007	SAS 5026-004	15	151	RCP	3	P2
TROY DR	SAS 5026-004	SAS 5026-003	15	142	RCP	3	P2
TROY DR	SAS 5125-004	SAS 5025-007	18	263	RCP	1	P3
TROY DR	SAS 5025-007	SAS 5026-002	18	61	RCP	0	P3
TROY DR	SAS 5026-002	SAS 5026-003	18	253	RCP	1	P3
MARCY RD	SAS 5026-003	SAS 5026-015	18	346	RCP	3	P3
MARCY RD	SAS 5026-015	SAS 5026-021	18	370	RCP	6	P3
MARCY RD	SAS 5026-021	SAS 5126-015	18	325	RCP	4	P3
MARCY RD	SAS 5126-015	SAS 5127-007	18	322	RCP	4	P3
WOODWARD DR	SAS 5127-007	SAS 5127-008	18	201	RCP	1	P4
WOODWARD DR	SAS 5027-014	SAS 5127-008	12	291	RCP	4	P4
WOODWARD DR	SAS 5127-008	SAS 5127-009	24	260	RCP	3	P4
FORSTER DR	SAS 5227-002	SAS 5227-001	24	323	RCP	1	P5
FORSTER DR	SAS 5227-001	SAS 5226-014	24	391	RCP	1	P5
FORSTER DR	SAS 5226-014	SAS 5226-013	24	338	RCP	2	P5
FORSTER DR	SAS 5226-013	SAS 5226-007	24	330	RCP	2	P5

PLOT SCALE:

PLOT NAME:

REV. DATE:

ORIGINATOR: CITY OF MADISON, STREETS DIVISION



LEGEND

PROP. CIPP MAINS ————

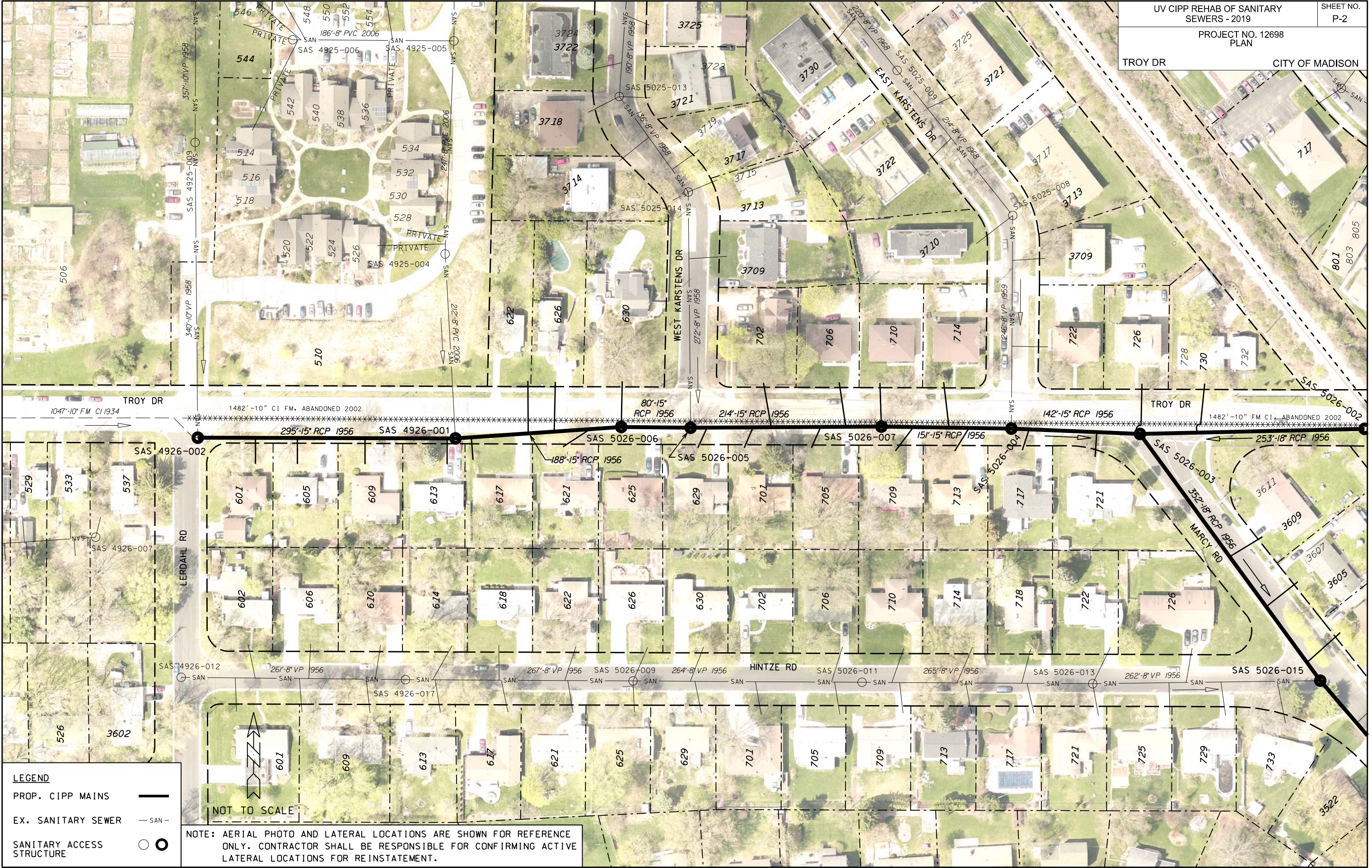
EX. SANITARY SEWER — SAN —

SANITARY ACCESS STRUCTURE ○ ●

NOTE: AERIAL PHOTO AND LATERAL LOCATIONS ARE SHOWN FOR REFERENCE ONLY. CONTRACTOR SHALL BE RESPONSIBLE FOR CONFIRMING ACTIVE LATERAL LOCATIONS FOR REINSTATEMENT.

NOT TO SCALE

ORIGINATOR: CITY OF MADISON, STREETS DIVISION
 REV. DATE: _____
 PLOT NAME: _____
 PLOT SCALE: _____



LEGEND

PROP. CIPP MAINS ———

EX. SANITARY SEWER — SAN —

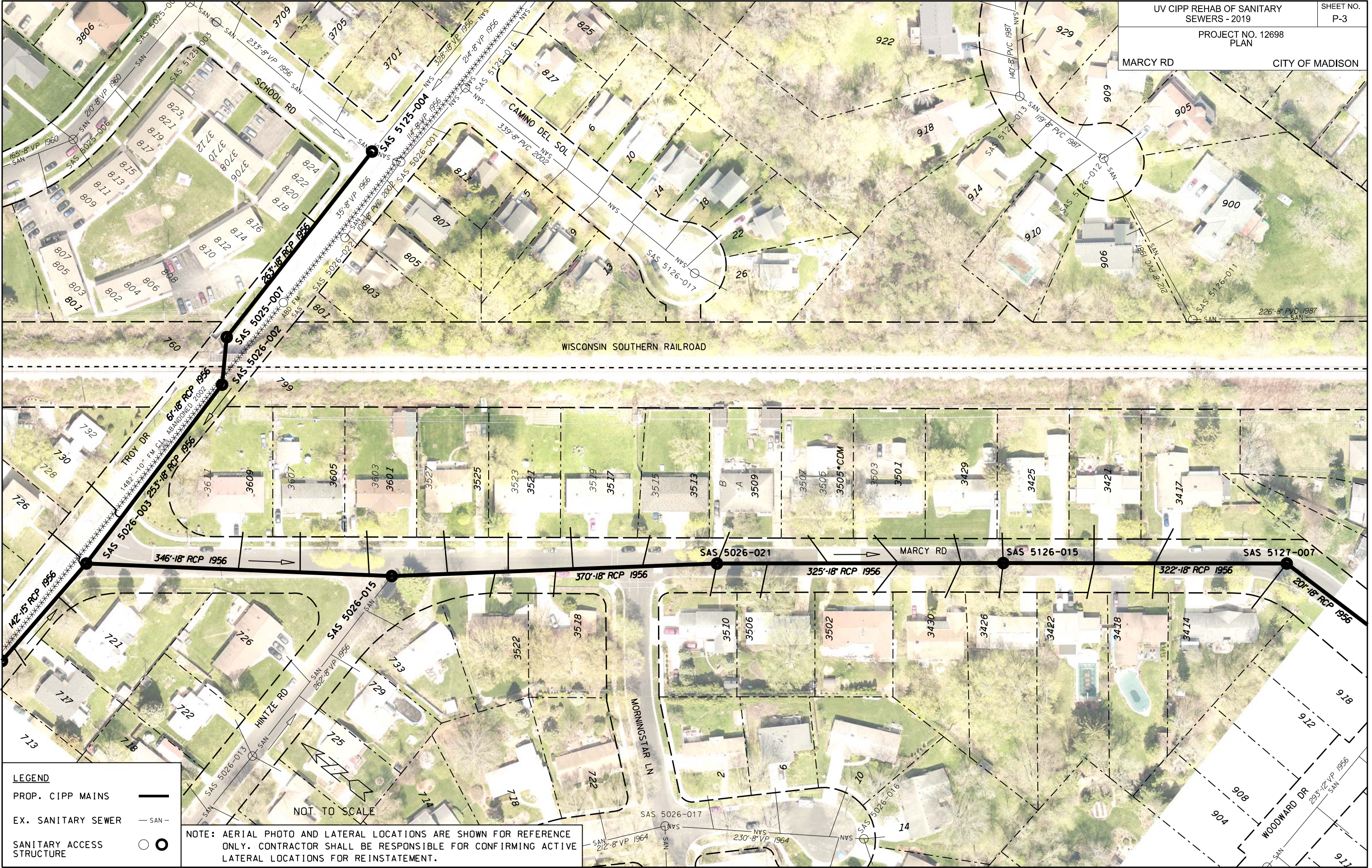
SANITARY ACCESS STRUCTURE ○

NOTE: AERIAL PHOTO AND LATERAL LOCATIONS ARE SHOWN FOR REFERENCE ONLY. CONTRACTOR SHALL BE RESPONSIBLE FOR CONFIRMING ACTIVE LATERAL LOCATIONS FOR REINSTATEMENT.

PLOT SCALE: _____

REV. DATE: _____

ORIGINATOR: CITY OF MADISON, STREETS DIVISION



LEGEND

PROP. CIPP MAINS ———

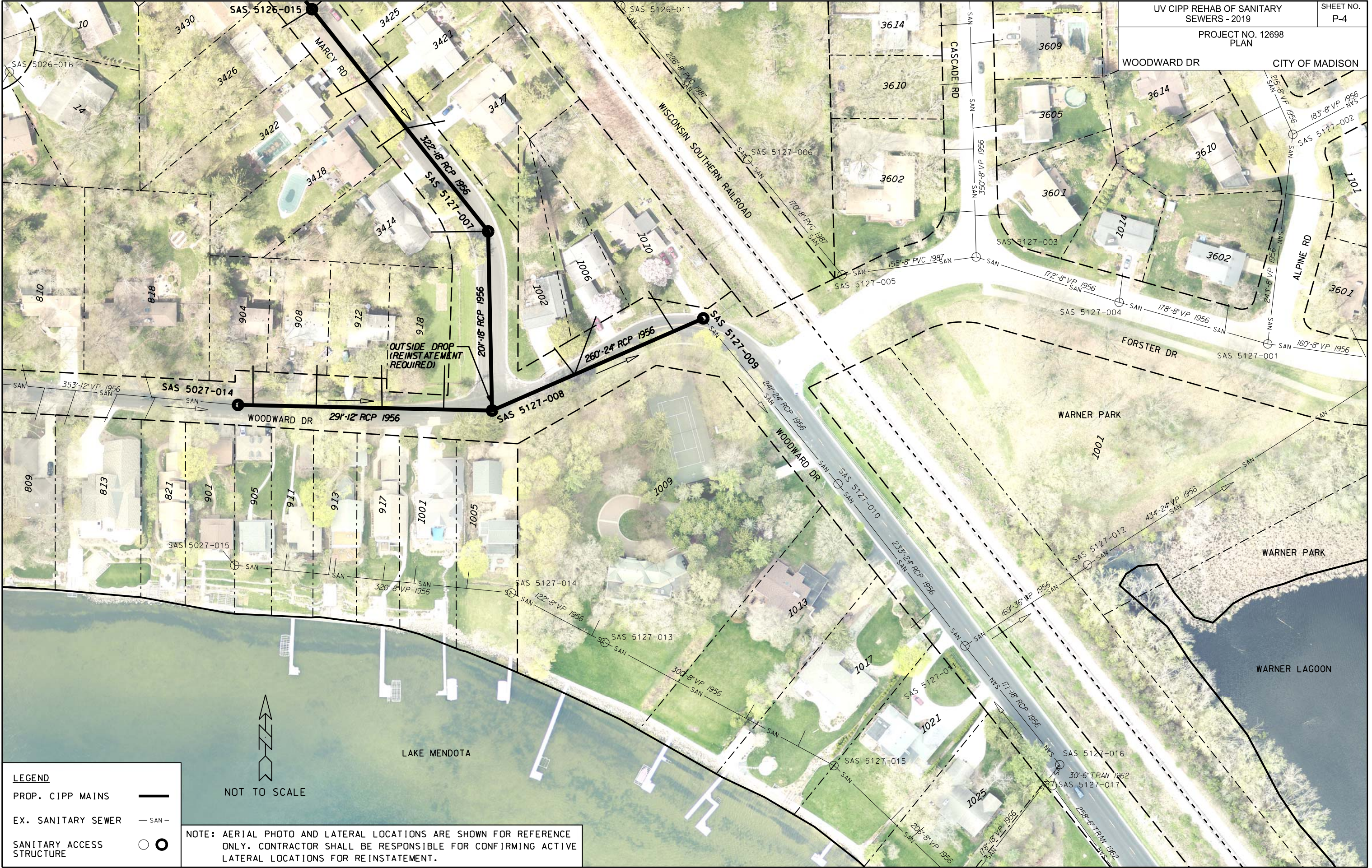
EX. SANITARY SEWER — SAN —

SANITARY ACCESS STRUCTURE ○

NOTE: AERIAL PHOTO AND LATERAL LOCATIONS ARE SHOWN FOR REFERENCE ONLY. CONTRACTOR SHALL BE RESPONSIBLE FOR CONFIRMING ACTIVE LATERAL LOCATIONS FOR REINSTATEMENT.

NOT TO SCALE

PLOT SCALE: _____
 PLOT NAME: _____
 REV. DATE: _____
 ORIGINATOR: CITY OF MADISON, STREETS DIVISION



LEGEND

PROP. CIPP MAINS ———

EX. SANITARY SEWER — SAN —

SANITARY ACCESS STRUCTURE ○ ●



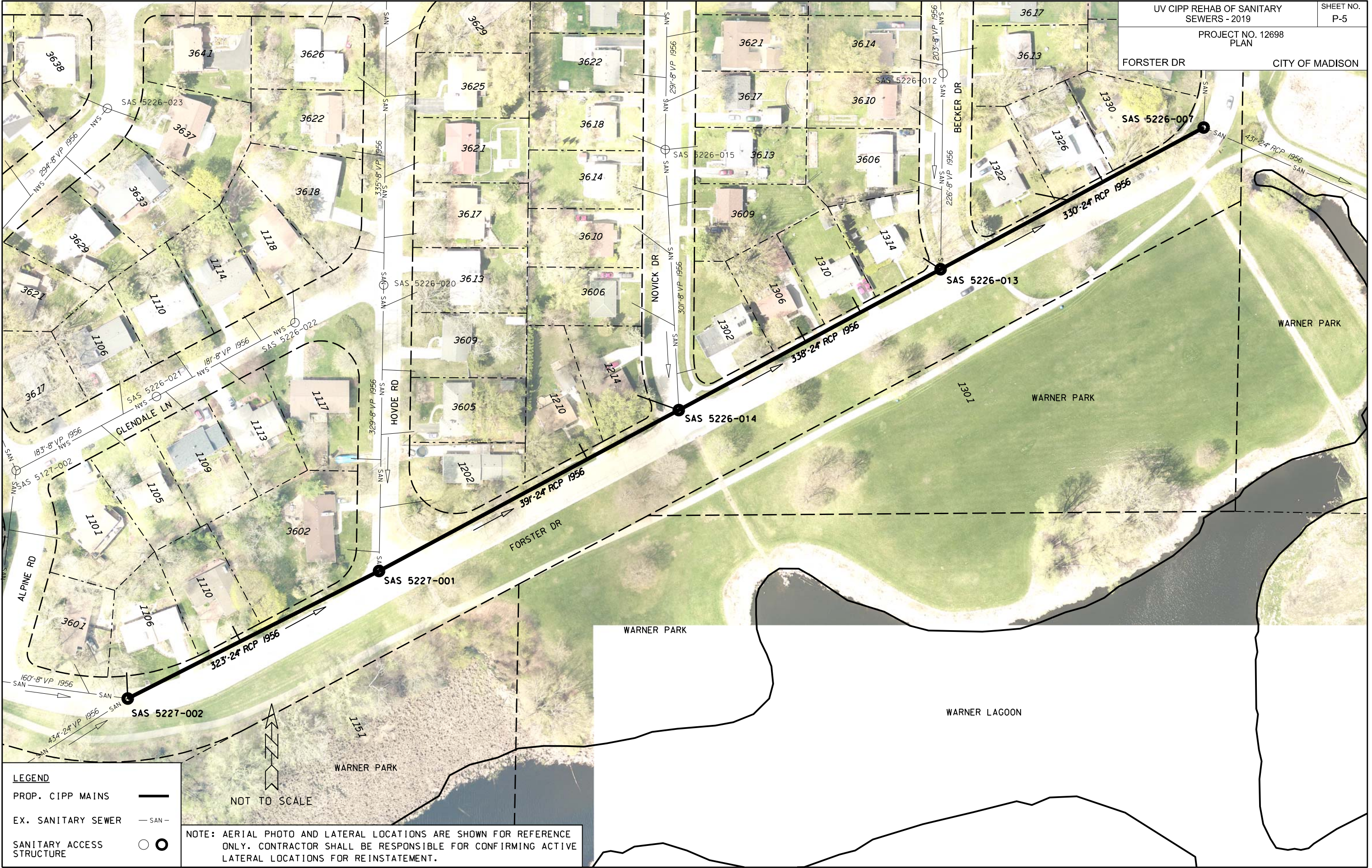
NOTE: AERIAL PHOTO AND LATERAL LOCATIONS ARE SHOWN FOR REFERENCE ONLY. CONTRACTOR SHALL BE RESPONSIBLE FOR CONFIRMING ACTIVE LATERAL LOCATIONS FOR REINSTATEMENT.

PLOT SCALE: _____

PLOT NAME: _____

REV. DATE: _____

ORIGINATOR: CITY OF MADISON, STREETS DIVISION



PLOT SCALE: _____

PLOT NAME: _____

REV. DATE: _____

ORIGINATOR: CITY OF MADISON, STREETS DIVISION

LEGEND

PROP. CIPP MAINS	—
EX. SANITARY SEWER	— SAN —
SANITARY ACCESS STRUCTURE	○ ●

NOT TO SCALE

NOTE: AERIAL PHOTO AND LATERAL LOCATIONS ARE SHOWN FOR REFERENCE ONLY. CONTRACTOR SHALL BE RESPONSIBLE FOR CONFIRMING ACTIVE LATERAL LOCATIONS FOR REINSTATEMENT.